

**Brad® SST™ backplane communication module connects your Rockwell ControlLogix® controller to PROFIBUS networks.**



Leader for 15 years in connectivity for Rockwell ControlLogix® controllers, Brad® SST™ communication modules are the perfect choice for a wide range of applications including factory automation, process control and complex machines.

Brad® SST™ PB3 PROFIBUS module connects Rockwell ControlLogix® controller to PROFIBUS networks. Each module has a communication port that act as PROFIBUS-DP Master and/or Slave protocols to exchange data with other PROFIBUS compatible devices.

Brad® SST™ PB3 module is delivered with its "Add-On-Profile" (AOP) for easy integration into the ControlLogix® system using the RSLogix 5000 software. The data transfer from the Brad® SST™ module to the ControlLogix® processor supports 2 modes; a "direct mode" allowing mapping of PROFIBUS data in I/O processor image (496 input bytes / 496 output bytes) and a "paging mode" allowing access to 1984 input bytes and 1968 output bytes of PROFIBUS data from user-defined data space set up into Logix CPU memory.

Save your time, the Brad® SST™ module doesn't require any ladder logic programming to be used. The configuration is created using Windows engineering console software connected via RLL (Remote Link Library) functionality allowing a remote access to the Brad® SST™ module for the configuration and the diagnostics through Rockwell network architectures (Ethernet/ControlNet/DeviceNet).

The Brad® SST™ engineering console allows the user to define the network parameters, PROFIBUS devices and the cyclic data exchanges. The Brad® SST™ software package includes diagnostic tools to help with the commissioning and monitoring of the PROFIBUS connection. Thus, the user-friendly tools are available for controlling the communication in commissioning phase (PROG mode). This same information is also available in production (RUN mode) through status words making it possible for the user to manage the execution of the control application in its ladder logic

**Brad® SST™  
Communication Module  
for Rockwell  
ControlLogix®**

112016 PROFIBUS-DP Master/Slave



Brad® SST™ Backplane Communication Module

**FEATURES AND BENEFITS**

**New!**

- **Add-On-Profile!**  
**For increased functionality and reduced commissioning time.**
- **Conformal coating module version; improves and extends the working life and ensures security and reliability of performance**
- **Save money!**  
No ladder logic to write for configuration and data transfer between module and ControlLogix® processor
- RLL feature: configure and diagnose PROFIBUS network remotely via Rockwell RSLinx
- Advanced Windows engineering configuration and diagnostics console
- Automatic PROFIBUS devices detection
- Up to 8 Brad® SST™ modules can be used in one ControlLogix® rack
- Support local and remote ControlLogix® chassis



**Class 1, Div 2**



**APPLICATIONS**

- Control/Command of Modbus devices to perform tasks with strong critical time constraints
- Supervision / Scada to monitor plant
- Bridge Rockwell networks to Modbus compatible devices



## SPECIFICATIONS

### Product Package

- Engineering Tools
  - Configuration console
  - Test and diagnostic tools
- Supported OS:
  - Windows (32-bit): XP, 2000

### Technical Data

- Bus interface:
  - Rockwell 1756 ControlLogix
  - Support multiple modules in a chassis
  - Local and remote rack
- Memory:
  - 512 MB of onboard shared memory
  - 512 MB of flash memory (user configuration and firmware)
- Diagnostics:
  - 4 scrolling characters display
  - 3 LEDs indicator:
    - Health of the network (COMM)
    - Communication status (SYS)
    - Initialization complete and module is ok (OK)
- I/O Mapping:
  - Maximum 1984 input bytes
  - Maximum 1968 output bytes
  - Maximum 250 words status
- Current Consumption:
  - 850 mA @ 5V or 1.75 mA @ 24V
- Operating Temperature: 0 to +60°C
- Storage Temperature: -40 to +85°C
- MTBF: 81.2 years

### Communication Ports

- 1x PROFIBUS port
  - Sub-D, 9-pin, female
  - PROFIBUS RS485 with galvanic insulation (500 V)
  - 9.6 Kbps to 12 Mbps
- 1x USB Port:
  - Type A, USB 2 and 1.1 compatible
  - User configuration boot
  - Module firmware upgrade

### Protocols

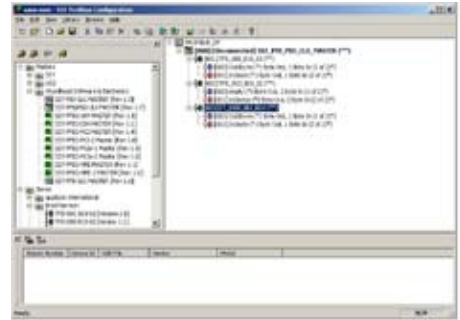
- PROFIBUS DP-V0 Class-1 & Class-2
- PROFIBUS DP-V1 Class-1 & Class-2
- PROFIBUS DP-V0 Slave

### Conformances

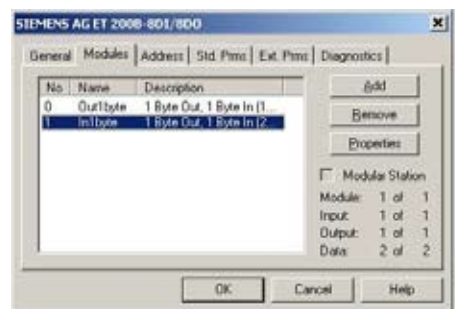
- CE
- RoHS
- Class 1 / Div 2 - Groups A,B,C & D Hazardous (Classified) locations
- Rockwell Encompass

## Brad® SST™ Communication Module for Rockwell ControlLogix®

112016 PROFIBUS-DP Master/Slave



Configuration Console



## ORDERING INFORMATION

Order No.	Engineering No.	Description
112016-0018	SST-PB3-CLX-RLL	Brad® SST™ PROFIBUS Scanner for AB ControlLogix, includes RLL
112016-0023	SST-PB3-CLX-RLL-CC	Brad® SST™ PROFIBUS Scanner for AB ControlLogix, coated version, includes RLL
112016-0019	SST-PB3-CLX-DTM	Brad® SST™ PROFIBUS Scanner for AB ControlLogix, includes RLL and CommDTM driver license
112016-0020	SST-PB3-CLX-DTS	Brad® SST™ CommDTM update driver license for PROFIBUS Scanner

All other products and company names in this datasheet may be trademarks of their registered owners.

**molex**

www.molex.com