

Brad® SST™ remote scanner for DeviceNet provides high-speed control using Ethernet to replace the PC bus preserving PC application investment.

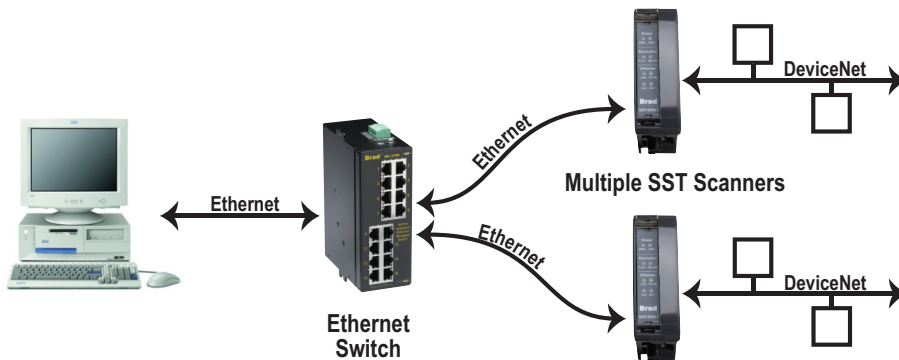
The SST™ Remote Scanner for DeviceNet controls and monitors I/O devices connected to a DeviceNet network without the need of a local PC. DIN rail mountable, multiple SST Remote DeviceNet Scanners can be connected to one Ethernet switch which is then connected back to a PC residing on an Ethernet network. The PC allows users to remotely access I/O and diagnostic information from the SST Remote DeviceNet Scanner and the DeviceNet network.

Benefits include:

- Backward compatible DLL preserves existing investment for SST DeviceNet card users
- DIN rail mounting allows distribution to machine level
- Frees up PC slots by placing scanner cards remotely
- Manage your DeviceNet application across an Ethernet LAN
- Reduce infrastructure costs by using cheaper Ethernet cable and fewer and less expensive PCs

SST™ Remote Scanner for DeviceNet

DeviceNet control over Ethernet



Side View



Bottom View

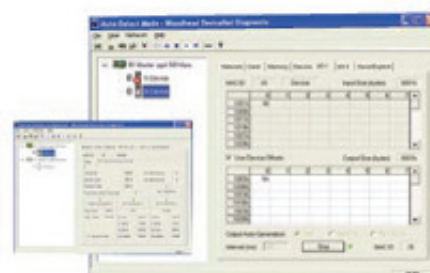
FEATURES

- High performance DeviceNet protocol executed via multiple SST Remote DeviceNet Scanners
- User interface DLL/API is backward compatible with existing applications and local DeviceNet interface cards
- Diagnostic LEDs
- UCMM (Unconnected Message Manager) capable; Group 1, 2, and 3 dynamic explicit connections supported
- Provides simultaneous execution of Group 2 Client (Master) and Server (Slave) operation
- Supports all DeviceNet standard baud rates: 125, 250, and 500 Kbaud
- Supports Poll, Strobe, Change of State (COS) and Cyclic I/O messaging
- Provides Client (Master) explicit messaging to slave devices

SOFTWARE TOOLS

The Remote DeviceNet Diagnostic Tool enables fast integration of the Remote DeviceNet Scanner by:

- Automatically detecting devices on the network
- Displays information regarding the network, including the status of the scanner, slave devices, CAN and general bus data
- Displays the configuration information for the master, server and DN network devices
- Displays and allows changes to the I/O data for the server and network devices
- Allows explicit messages to be sent to network devices
- Allows definition of the remote scanner configuration

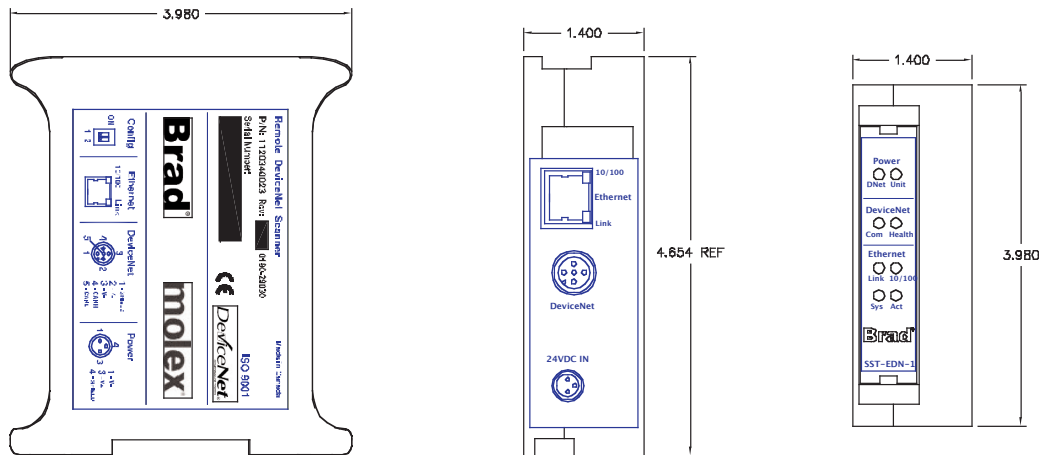


SPECIFICATIONS

Diagnostic LEDs	Remote Scanner – Power, System Status DeviceNet – Power, Communication, Health Ethernet – Link, 10/100 MBaud, Activity
Remote Scanner Power	10 – 30V DC, 330mA typical (male Nano-Change® M8 connector)
Operating Temperature	0 to +50°C (+32 to +122°F)
Storage Temperature	-40 to +85°C (-40 to +185°F)
Humidity	5 to 95% non-condensing
RoHS Compliant	Yes
Approvals	CE, ODVA DeviceNet Conformance

NETWORK SPECIFICATIONS

OS and Drivers Supported	Microsoft Windows XP, Vista and 7 (32/64 bit) drivers Example C source code and Windows 32-bit DLLs for custom driver development
Protocol	DeviceNet master – Group 2 Client, Group 2 only Client DeviceNet slave – Group 2 Server CAN 2A Isolated CAN physical layer on each channel (CANH/CANL)
Cables	DeviceNet: shielded twisted pair, compatible with target network Ethernet: Cat 5e shielded
Connectors	DeviceNet: compliant male Micro-Change® M12 connector Ethernet: RJ45
DeviceNet Power	11-24V DC, 50mA typical
Isolation	500V
Data Rates	125K, 250K and 500K baud for DeviceNet 10/100 Mbit for Ethernet



ORDERING INFORMATION*

SAP Material Number	Catalog Number	Product Description
1120340021	SST-EDN-1	SST™ Remote DeviceNet Scanner (without cables)
1120340026	SST-EDN-1-C2	SST™ Remote DeviceNet Scanner with cable kit (DeviceNet and Power) <ul style="list-style-type: none"> • Single-ended power cable: 3-pole, M8 connector on one end, 2 meters (6.6ft), UL/CSA cable, Cat. No. 403000A10M020 • Single-ended DeviceNet cable: 5-pole, M12 connector on one end, 2 meters (6.6ft), UL/CSA cable, Cat. No. DND20A-M020

*Remote DeviceNet Scanners can be ordered with cable kits (see above) or alternate cables can be ordered.